



# Low-E Housewrap

An ICC Approved Stand Alone Insulated Housewrap

- \* For Use Behind Most Any Exterior Cladding
- \* Built In Overlap Means Full Five Square Coverage
- \* Installs Like Any Traditional Housewrap
- \* Helps Meet IECC Code Without Switching to 2' x 6' Construction
- \* Blocks 97% Of Radiant Heat & Provides A Thermal Break
- \* Used by Top Builders and Remodelers Nationwide
- \* Adds R-Value To Wall System
- \* Increases Energy Savings
- \* Improves Insulation System Performance
- \* Year Round Comfort





# LOW-E HOUSEWRAP

## FEATURES AND SPECIFICATIONS



Scan Code to See  
Install Guide

### PRODUCT DESCRIPTION:

In a space thinner than a pancake, you can dramatically improve a home's energy efficiency. Using the same reflective technology that protects NASA astronauts from the sun's searing heat, Low-E Housewrap blocks 97% of radiant heat transfer through your walls. Low-E Housewrap combines the benefits of a weather-resistant barrier with superior thermal performance. It is light, safe and easy to cut with a utility knife. It can be fastened with staples or cap nails like an ordinary housewrap and stands up to rough handling. For full installation instructions, please refer to the Housewrap Install Guide at [www.low-e.com](http://www.low-e.com).

### Low-E Housewrap Insulation:

**PRODUCT CODES:** 4PFNS, 5PFNS, 6PFNS

**PRODUCT DIMENSIONS & DESCRIPTION:**

Single-sided scrimmed aluminum foil laminated to polyethylene foam, perforated (1/4" nominal thickness)

**WIDTH:** 4', 5', 6', with overlapping foil flange

**LENGTH:** 125', 100', 100'

**R-VALUE (CORE RESISTANCE):** R-1.03

**SYSTEM R-VALUE:** R-4\*

**R-VALUE:** R-3 (product & reflective airspace only)

**PERM RATING:** ASTM E-96 - 7 or 40 grams/(day·m<sup>2</sup>)

**WATER RESISTANCE:** ASTM D779 - 9hrs

**FLAME AND SMOKE:** ASTM E-84

**FLAME SPREAD:** Less than 25,

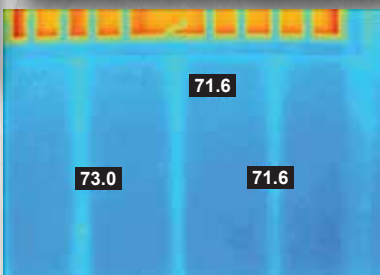
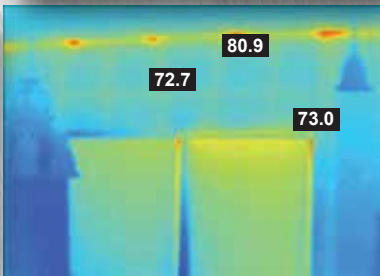
**SMOKE DEVELOPED:** Less than 50

**FULL SCALE FIRE TEST (walls only):** NFPA-286 Passed

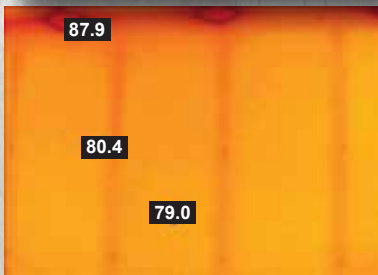
\*Horizontal heat flow: vinyl siding with 0.375 inch reflective airspace, Low-E Housewrap attached to nominal thickness 1/2 inch wood sheathing. Report from Geo Science available upon request.



House protected by  
Low-E Housewrap



House with conventional  
housewrap



Two Illinois homes built only 25 yards apart are virtually identical with one key difference. One was built with Low-E Housewrap, the other with traditional housewrap.

On an 85° summer day the north facing interior walls of both homes were photographed from inside with a heat measuring infrared camera. The images showed that very little summer heat penetrated either of the properly insulated walls.

The walls on the south side, where the sun shone directly on the house walls, told a different story. The wall protected by Low-E Housewrap all but stopped radiant heat transfer. The wall with traditional housewrap showed dramatic heat gain, absorbing heat and radiating it through the fiberglass insulation.

**For more information please visit our website at [www.low-e.com](http://www.low-e.com)  
or call 1-800-BUY-LOWE (800-289-5693)**