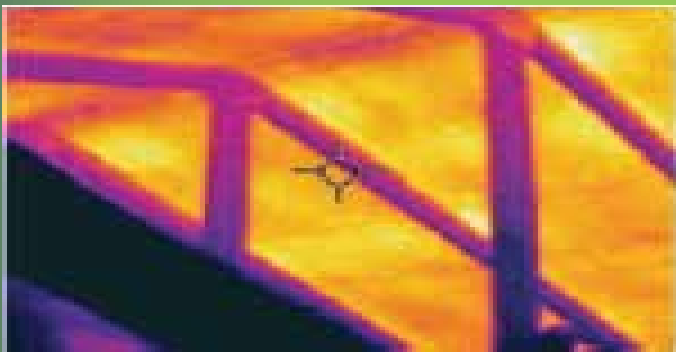




**Isn't It Time Your Roofing Underlayment Did More?**



Thermal imaging of an attic without ThermaSheet® roofing underlayment. Temperature is 129°



Thermal imaging of the same attic WITH ThermaSheet® roofing underlayment. Temperature is 98°

**Save Energy. Save \$\$\$.** Do More. With Less. Period.

For more information please visit our website at [www.low-e.com](http://www.low-e.com)  
 or call 1-800-BUY-LOWE (800-289-5693)



# LOW-E THERMASHEET® FEATURES & SPECIFICATIONS



UNDER SHINGLES



UNDER CLAY TILE



UNDER METAL



UNDER STONE COATED STEEL

- \* Self Seals Around Fasteners
- \* Lowers Attic Temperature
- \* Increases Energy Savings
- \* Great For New Or Re-Roofing
- \* TDI, CA & FL Approved
- \* Excellent Vapor Barrier
- \* Built In Overlap Means Full Five Square Coverage
- \* For Use Under Shingles, Metal Roof, Clay Tile & More

PRODUCT NAME: Low-E ThermaSheet®  
 PRODUCT CODES: 4LMPX - 1/8", 4LFPX - 7/32"  
 WIDTH: 4'  
 LENGTH: 125' (with a 4" overlapping flange)  
 R-VALUE: Under shingles - 4LMPX 0.5, 4LFPX 1.03  
 R-VALUE: R-9 downward heat flow only (with 1.5" airspace)  
 PERM RATING: ASTM E-96 0.008  
 EMITTANCE: ASTM C-1371 0.03



**Discover even more ways to lower energy costs with ESP Low-E® Insulation**

